

Technical Features
Measuring System

Operating mode	Absorbance, End-Point, Fixed Time, Kinetic, Multistandard
Throughput	Up to 140 tests/hour
Light source	Halogen lamp 12V 20W
Spectral Range	320-690 nm
Filter Wavelength	340, 405, 492, 505, 546, 578, 630 nm, one free position
Measuring Range	From -0.200 to 2.500 O.D.
Flow Cell	18 μ L
Incubation temperature	37°C; \pm 0.2°C
Minimum Reading volume	350 mL
Typical Reading volume	500 mL

Sample Handling

Sample number	54 positions including samples, calibrators and controls/tray
Sample container	Cup (1.2 mL)
Sample volume	2-200 μ l (1 μ L steps)
Automatic dilution	Pre and post dilution ratio: 1:2 - 1:20

Reagent Handling

Reagent tray	20 bottles + 1 bottle for diluent
Reagent bottle	45 ml
Reagent volume	Reagent 1 volume range: 30 to 1000 μ L (1 μ L steps) Reagent 2 volume range: 0 to 1000 μ L (1 μ L steps)
Liquid detection	Sensor
Reagent warming	Pre-heated arm
Reagent identification	Position ID
Tray exchange	Possible with reagent bottles

Reaction

Number of wells	144 wells (12 wells x 12 strips)
Well volume	1 mL
Well temperature	37°C; \pm 2°C

Diluter

Syringe	1000 μ L, 1 μ L steps
Accuracy	\pm 1% at 5 μ L

Computer

Computer	Built-in
Computer description	Intel® Processor, 20 GB HD, 128 MB RAM
Operating system	Microsoft Windows®
Display	TFT 12", 800x600
Network adapter	Built-in
Printer	Built-in thermal printer, 120 mm
Output	RS232, LPT
Drive	CD ROM, Floppy disk 3.5" 1.44 Mbytes

General

Power Supply	AC115-230V 50-60Hz full range
Dimensions	720 (L) x 680 (W) x 750 (H) mm - open display 720 (L) x 680 (W) x 530 (H) mm - closed display
Weight	55 kg



Distributed by



Biochemical

SEDE LEGALE:
Via G. Ferraris, 220
52100 AREZZO - ITALIA
Tel. +39 0575 984164
Fax +39 0575 984238

Systems

DIVISIONE STRUMENTAZIONE:
Via B. Buozzi, 253
50013 Campi Bisenzio (FI) - ITALIA
Tel. +39 055 8963140
Fax +39 055 8997086

International Srl

e-mail:
biosys@biosys.it
Web Site:
<http://www.biosys.it>



Biochemical **S**ystems **I**nternational Srl

F U L L Y

AUTOMATED CLINICAL CHEMISTRY ANALYSER

*Advanced Technology,
Design,
New Generation*



F U L L Y

FULLY

AUTOMATED CLINICAL CHEMISTRY ANALYSER

*Make FULLY system your
next move in clinical
chemistry analysis*

Innovative technology and friendly use meeting all you requirements: simplicity, reliability, accuracy and competition. Today's laboratory environment demands an expert system with an economic advantage. The revolution design make FULLY a compact and completed analyser. Your laboratory will become more advanced. The clinical chemistry system FULLY is uniquely designed to answer the real needs of laboratories: low acquisition and operating costs, simple and flexible use, minimum maintenance

FULLY

SYSTEM OVERVIEW



REAGENT TRAY



SAMPLE and REACTION TRAY



WORKING OVERVIEW

FULLY

The particular design of the reagent bottle have been developed in order to avoid reagent lost

- 20 position reagent tray to maximize the number of tests/sample at a time
- Flexibility to run both single and two reagent chemistries
- Open system that enables the programming of an unlimited number of techniques

MODERN

The common shape of reaction wells and cups could be easily found in the local market

- Programmable washing cycles between samples and tests for minimizing carry over
- Analysis of up to 54 samples at a time for walkaway convenience
- Auto-rerun with pre-dilution

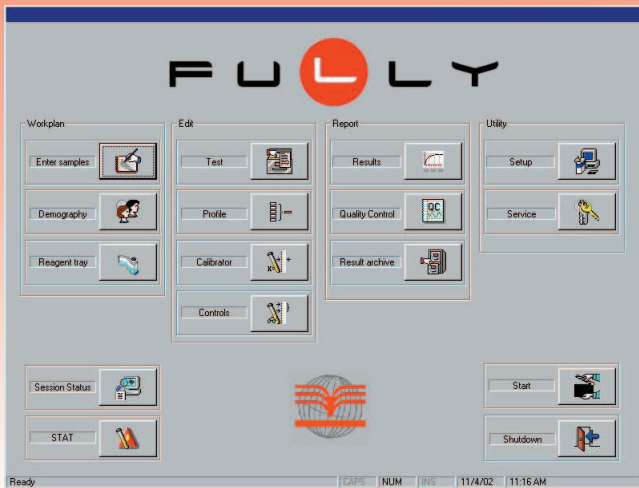
COMPACT

Proven and high technique will assure accurate measuring system and easy maintenance

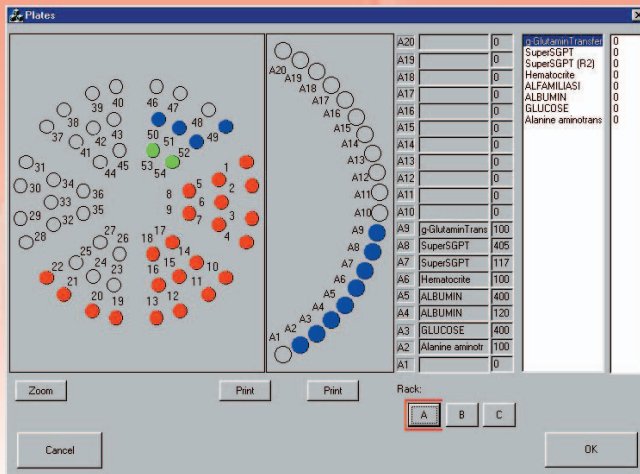
- 18 μ l flow cell volume for economical running costs
- Auto-level sensing
- Built in high performance PC computer
- Peltier controlled flow cell temperature
- Washing and Waste tanks level sensors

INNOVATIVE

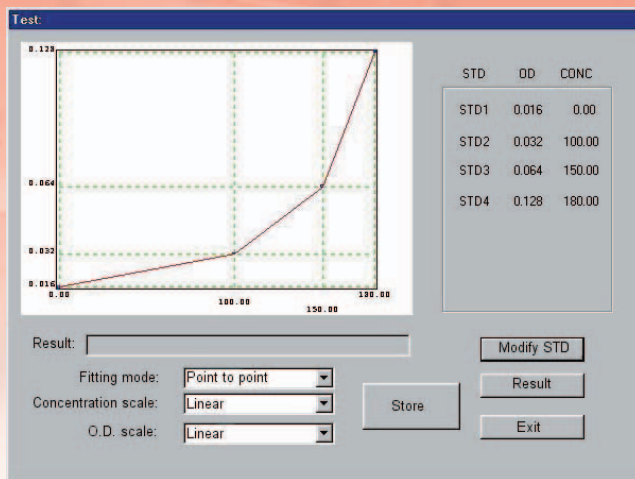
FULLY



MAIN MENU



SAMPLE and REAGENT LOCATION



RESULTS GRAPH

Discover the simplicity of operating with Windows® environment. Skilled laboratory staff will be able to run FULLY within short time. System maintenance instructions are integrated in the software.

- Built in PC computer with 12" TFT Monitor, 800X600 cordless keyboard and mouse

- Easy selection menu by icons

- The positions of reagents is automatically determined by the workplan with the volumes required once the samples and reagents have been programmed

- 9 profiles of up to unlimited chemistries each to simplify your task of profile management

- Continuous working status monitoring

- Automatic flagging of abnormal test samples with programmable interpretative messages

- QC program with Levey-Jennings plot

- Intelligent error management

- Integrated maintenance scheduling

- Multilanguage support

- Network integration facilities

- Built in thermal printer and additional output for external connection